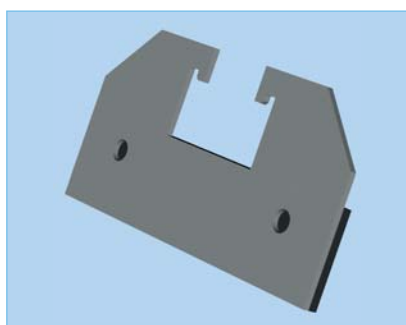


# Trapezoidal roof fixing

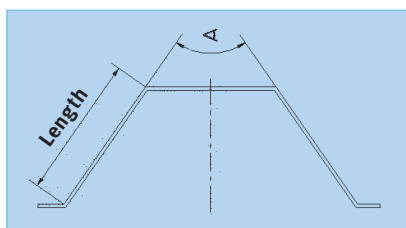
for fixing of elevation angles  
and roof parallel solar installations  
Assembly instructions



The roof must be able to carry the extra weight which results from the assembly of a PV-system.

The assembly set is suitable as fastener on trapezoidal metal sheets with a pleat spacing of up to 350 mm (larger sizes upon request), a trapezoidal sheet angle between 30° to 84° and a length of at least 27 mm at a 30° angle.

With a larger angle than 30°, up to a maximum of 84°, the required minimum length reduces accordingly.

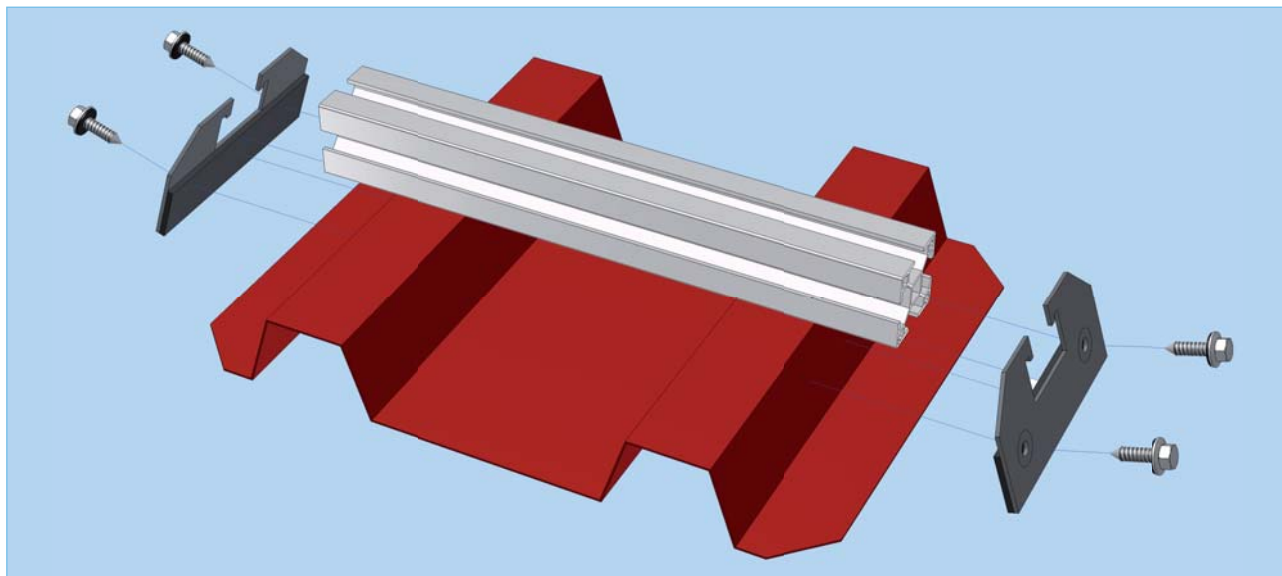


Please note that the thin metal screws urgently require a specific thickness of the trapezoidal sheet metal.

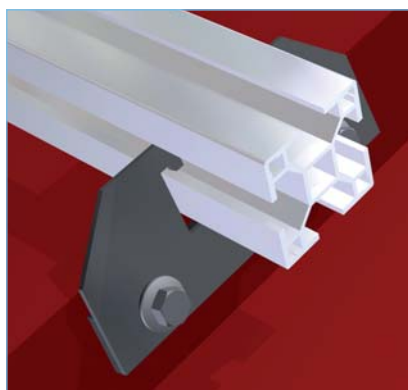
Angle	min. length
30°	27,0 mm
35°	26,8 mm
40°	26,6 mm
45°	26,3 mm
50°	26,0 mm
55°	25,7 mm
60°	25,3 mm
65°	24,8 mm
70°	24,3 mm
75°	23,7 mm
80°	23,1 mm
84°	22,5 mm

If a miss drill occurs due to overwound TEK screws or holes from loosened TEK-screws must not be used again. The trapezoidal roof fixing must be attached on neighbouring pleats.

## Trapezoidal roof fixing Assembly instructions



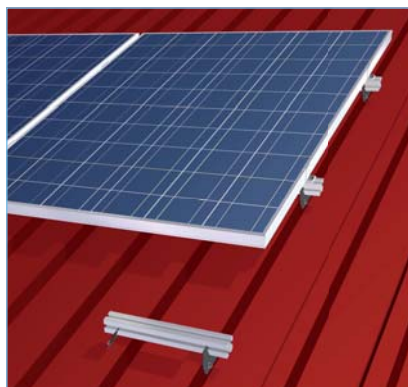
First align the tracks on the pleats of the trapezoidal roof. We recommend sticking the EPDM tape (two 40 × 30 × 3) onto the track area to seal the surface. The fasteners with EPDM tape are hooked into the side grooves of the track and pushed towards the pleat of the corrugated metal.



During the assembly you need to ensure that the trapezoidal sheet fasteners with the EPDM tape lies on the pleat surface and pressed down against the rail.

Fastening happens with enclosed thin metal screws which have to be screwed with depth stop.

Start with the left screw. This prevents a mix up of the fasteners.



The mounting kits must be assembled according to the specified terminal points of the modules used. It is important to ensure that the module joint is on the rail between the points of attachment of the trapezoidal sheet fastener.